

# IXIA IBYPASS 10GB

## PROBLEM: INLINE TOOLS ARE A SINGLE POINT OF FAILURE IN THE NETWORK

Today's organizations are facing a triad of network concerns: the increasing volume of multiprotocol traffic at higher data rates, mounting security threats, and a strict regulatory environment. Deploying inline tools to inspect and control network traffic can help block incoming threats, but inline tools also complicate network operations—the more tools you deploy, the more potential points of failure. And in the event an inline tool becomes unavailable, it can completely bring down the network link, significantly compromising network uptime and disrupting business continuity.

## SOLUTION: INCREASE NETWORK UPTIME WITH A HIGH-DENSITY BYPASS PLATFORM

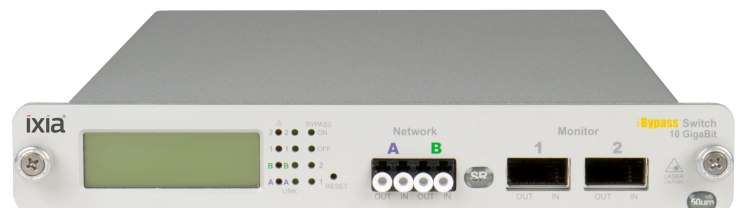
Get fail-safe inline protection for all network monitoring tools with Ixia's iBypass 10G. You'll improve overall network reliability, increase application availability, and add the convenience and cost savings of remote monitoring and control—all important requirements for any enterprise deployment.

iBypass 10G provides built-in tap and bypass functions and the following unique capabilities:

- **Smart Management** - The iBypass 10G is a fully managed device and allows the user to view and change settings through a CLI, user- friendly Web UI, and SNMP browsers.
- **Security** - CLI/SSH, HTTPS and SNMP V3 and V2.
- **Customizable and Pre-programmed Heartbeats** - Each bypass switch enables users to create and customize heartbeats right in the Web Interface.

## HIGHLIGHTS

- **Reduce setup times** with configurable Heartbeats in the Web UI
- **Increase reliability** by adding fail-safe inline protection to critical network links
- **Remote management** through SSH, Web Interface (HTTPS) and SNMP Browsers
- **Field upgradable software** and firmware
- **View size and time** of the peak traffic
- **View status** for power, link, activity, and activity status
- **Bi-directional Heartbeats**
- **Minimize traffic interruption** with high-speed forwarding
- **Save on maintenance costs** with field replaceable power supplies
- **Optimize rack space** using 1U rack mount for two bypass switches



## AUTOMATIC PROTECTION AND RECOVERY

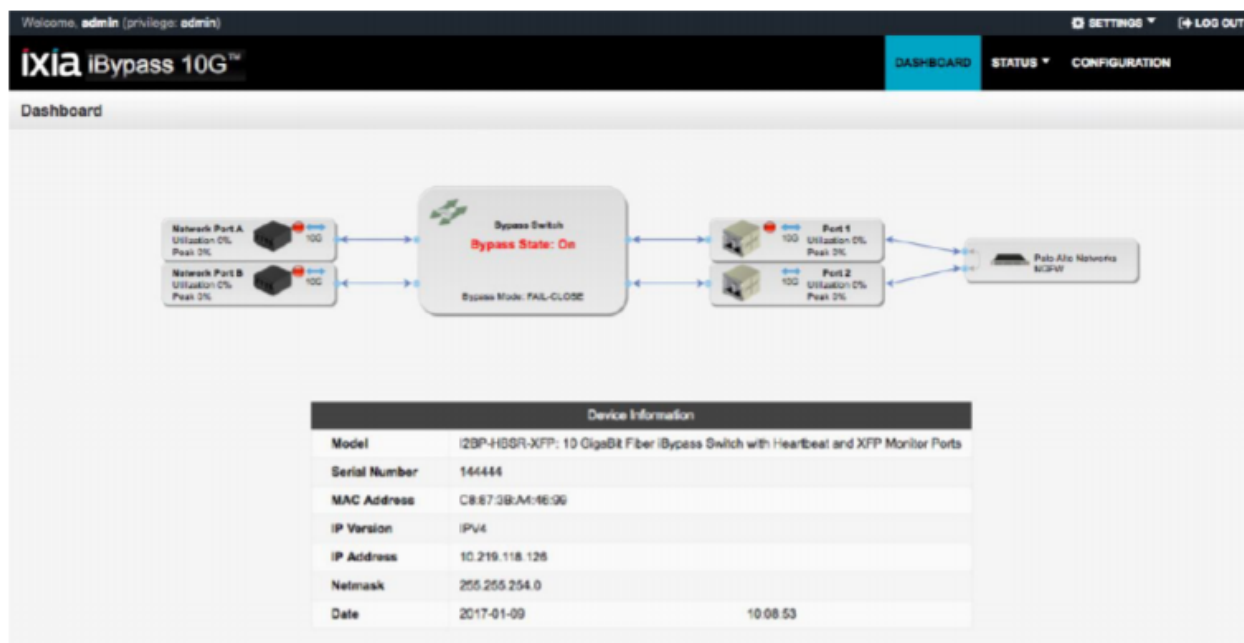
The iBypass 10G switch continuously checks the responsiveness of the inline tool by sending it “heartbeat” packets, expecting to receive those packets back. If the iBypass 10G detects that the tool is not responding, it will bypass the inline tool, allowing network traffic to flow without interruption. Should that happen, the iBypass 10G will also issue an alert to indicate that the tool became unavailable, allowing network or security personnel to take appropriate actions.

The iBypass 10G will continue to send heartbeat packets to the inline tool even after the tool stopped responding. As soon as the tool becomes operational again, the iBypass 10G will re-route traffic back through the tool to ensure that the tool is continuing to monitor and/or protect the network.

## SMART MANAGEMENT

The iBypass 10G is a fully managed device and allows the user to view and change settings through a Command Line Interface, a user- friendly Web UI, and SNMP browsers. Remote management security is provided through Role Based User Access, 1024-bit SSL encryption, HTTPS, SNMP, SSH, and an IP Access List to prevent unwanted access to management interfaces. The iBypass 10G can be configured to disable access to each of the interfaces. In the event there are system, link, power, or threshold changes the iBypass 10G issues SNMP traps, that are directed to the desired management devices, set in any of the interfaces.

The iBypass 10G comes with different LED indicators for power, link, bypass status, and activity status. The LCD provides peak and real time network utilization information for both of the network ports enhancing local, on-site, device monitoring options.



Login Dashboard

## NETWORK INTELLIGENCE

The iBypass10G includes Remote Monitoring (RMON) statistics and Ixia ProPush™ statistics. ProPush statistics provide key network statistics every second. The combination of the many RMON and ProPush statistics provides great visibility into the network and allows integration with existing network management tools.

Welcome, **admin** (privilege: admin) SETTINGS LOG OUT

**ixia iBypass 10G™** DASHBOARD STATUS CONFIGURATION

Remote Monitoring Statistics (RMON)

	PORT A		PORT B		PORT 1		PORT 2	
	Rx	Tx	Rx	Tx	Rx	Tx	Rx	Tx
Total Bytes	157,722,964,480	157,722,964,496	164,580,639,648	164,580,639,648	164,580,502,136	164,580,502,112	161,151,898,552	161,151,898,552
Total Pkts	2,464,421,326	2,464,421,320	2,571,572,497	2,571,572,491	2,571,570,342	2,571,570,348	2,517,998,418	2,517,998,418
Broadcast Pkts	0	0	0	0	0	0	0	0
Multicast Pkts	0	0	0	0	0	0	0	0
64 Byte Pkts	2,464,421,321	2,464,421,321	2,571,572,492	2,571,572,492	2,571,570,348	2,571,570,348	2,517,998,418	2,517,998,418
65-127 Byte Pkts	0	0	0	0	0	0	0	0
128-255 Byte Pkts	0	0	0	0	0	0	0	0
256-511 Byte Pkts	0	0	0	0	0	0	0	0
512-1023 Byte Pkts	0	0	0	0	0	0	0	0
1024-1518 Byte Pkts	0	0	0	0	0	0	0	0
1519-Max Byte Pkts	0	0	0	0	0	0	0	0
Undersized Pkts	0		0		0		0	
Oversized Pkts	0		0		0		0	
CRC Errs	0	0	0	0	0	0	0	0
Runt Errs	0		0		0		0	
Fragment Errs	0	0	0	0	0	0	0	0
Reset Statistics	<button>Reset</button>		<button>Reset</button>		<button>Reset</button>		<button>Reset</button>	

## RMON Display

Welcome, **admin** (privilege: admin) SETTINGS LOG OUT

**ixia iBypass 10G™** DASHBOARD STATUS CONFIGURATION

Statistics

	PORT A	PORT B	PORT 1	PORT 2
Port Peak Rate	96	90	91	90
Port Peak Time	2017-02-01 01:28:03	2017-02-01 02:42:32	2017-02-01 00:36:25	2017-02-01 00:33:19
Reset Peak Rate	<button>Reset</button>	<button>Reset</button>	<button>Reset</button>	<button>Reset</button>
Port Current Utilization	90	90	90	90
Port Rx Total Packets	1,607,231,332	1,714,380,064	1,714,380,187	1,553,657,063
Port Rx Total Bytes	102,862,805,248	109,720,323,928	109,720,331,976	99,434,051,840
Port Rx Broadcast Packets	0	0	0	0
Port Rx CRC Errors	0	0	0	0
Port Rx Undersized Packets	0	0	0	0
Port Rx Oversized Packets	0	0	0	0
Port Rx Dropped Packets	0	0	0	0
Port Tx Total Packets	1,607,231,339	1,714,380,058	1,714,380,188	1,553,657,061
Port Tx Total Bytes	102,862,805,064	109,720,323,936	109,720,332,040	99,434,051,752
Port Tx Broadcast Packets	0	0	0	0
Reset Statistics	<button>Reset</button>	<button>Reset</button>	<button>Reset</button>	<button>Reset</button>

## Statistics Display

## FLEXIBLE DEPLOYMENTS

Having an iBypass 10G deployed in front of inline tools provides greater deployment flexibility. When the inline tool needs to be taken out for maintenance the iBypass10G can be configured to bypass the inline tool and let network traffic flow uninterrupted. Once maintenance is complete, the iBypass10G can route traffic back through the upgraded tool.

## SPECIFICATIONS

SPECIFICATIONS	
Operating	Operating: <ul style="list-style-type: none"> <li>Operating Temperature: 0°C to 40°C</li> <li>Relative Humidity: 10% min, 95% max, non-condensing</li> </ul> Non-Operating: <ul style="list-style-type: none"> <li>Non-Operating Storage Temperature: -10°C to 70°C</li> <li>Relative Humidity: 10% min, 95% max, non-condensing</li> </ul>
Mechanical	Dimensions: 1.125"high x 14"deep x 6.5"wide Weight: 2.26lbs (1.03kg)
Connectors	<ul style="list-style-type: none"> <li>Monitoring Ports: 2 x XFP connectors</li> <li>Network Ports: 1 x Quad LC connector</li> </ul>
Insertion Loss (Power Failure ONLY)	Multimode 50um OM3 & 62.5um 850nm: <ul style="list-style-type: none"> <li>Network Port: 1.25 dB</li> <li>Monitoring Port: 1.25dB</li> </ul> Single Mode 8.5um 1310nm: <ul style="list-style-type: none"> <li>Network Port: 1.25 dB</li> <li>Monitoring Port: 1.25dB</li> </ul>
Power Supply	AC Power Input: 100-240VAC, 47-63Hz, 1A@120VAC Output: 5A @ 12VDC <ul style="list-style-type: none"> <li>Power Dissipation 103 BTU/Hr 30W</li> </ul>
Certifications	<ul style="list-style-type: none"> <li>Safety: UL 60950, cUL 60950, CE, CB</li> <li>Emissions and Immunity: FCC, EN, ICES-003 Class A</li> <li>Environmental: RoHS, WEEE, Fully IEEE 802.3 compliant</li> </ul>

## ORDERING INFORMATION

### Models

Part Number	Description
IBPO-HBSR-XFP	10 Gigabit SR iBypass Switch with Heartbeat
IBPO-HBLR-XFP	10 Gigabit LR iBypass Switch with Heartbeat
IBPO-HB50SR-XFP	10 Gigabit SR iBypass Switch with Heartbeat, 50µm

### Accessories

Part Number	Description
RK-iTP2	Two-slot rack-mount panel
XFPKT-SR	10 Gigabit Multimode Fiber XFP 62.5µm w/ cable
XFPKT-50SR	10 Gigabit Multimode Fiber XFP 50µm w/ cable
XFPKT-LR	10 Gigabit Singlemode Fiber XFP 1310nm w/ cable
XFPKT-ER	10 Gigabit Singlemode Fiber XFP 1550nm w/ cable

#### IXIA WORLDWIDE HEADQUARTERS

26601 AGOURA RD.  
CALABASAS, CA 91302

(TOLL FREE NORTH AMERICA)

1.877.367.4942

(OUTSIDE NORTH AMERICA)

+1.818.871.1800

(FAX) 818.871.1805

[www.ixiacom.com](http://www.ixiacom.com)

#### IXIA EUROPEAN HEADQUARTERS

IXIA TECHNOLOGIES EUROPE LTD  
CLARION HOUSE, NORREYS DRIVE  
MAIDENHEAD SL6 4FL  
UNITED KINGDOM

SALES +44.1628.408750

(FAX) +44.1628.639916

#### IXIA ASIA PACIFIC HEADQUARTERS

101 THOMSON ROAD,  
#29-04/05 UNITED SQUARE,  
SINGAPORE 307591

SALES +65.6332.0125

(FAX) +65.6332.0127